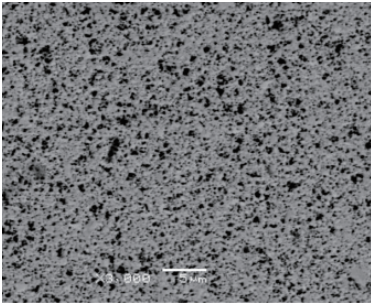




# Focusing Tubes



SEM



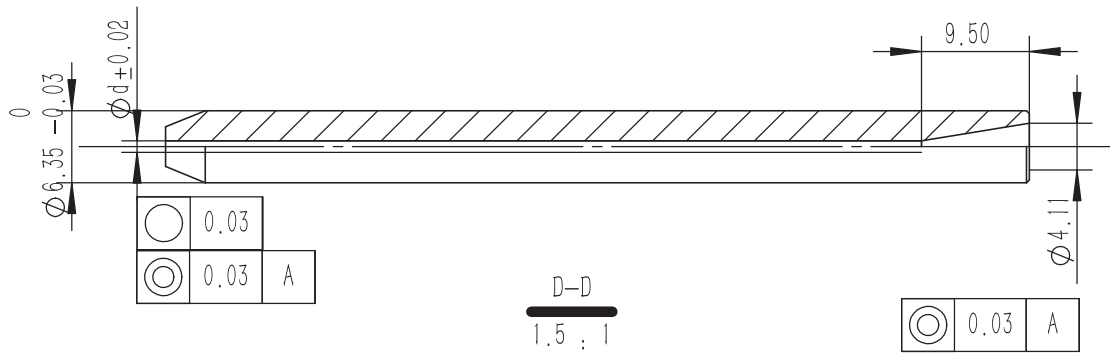
Abrasive Water Jetting (AWJ) is used, throughout industries, in cutting a variety of hard materials including stainless steel, titanium, aluminum, stone, granite and composites in difficult shapes quickly and precisely without thermal damage to the cut face, representing tremendous gains in efficiency and productivity. Our focusing tubes, a critical AWJ wear part, combine a ultra-fine low-cobalt Tungsten Carbide (WC) powder blended and unique processes to ensure high cutting speeds and accuracy as well as long lifetime under water pressures up to 600MPa. At the same time, we are open to customized parts with the recipe.

## Specification

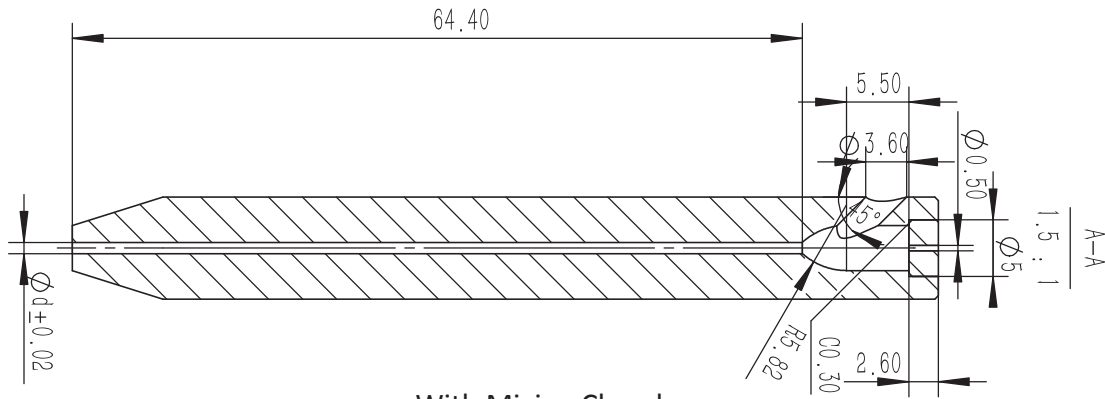
Co wt/wt%	WC
0.2-0.4	Balance

## Physical Properties

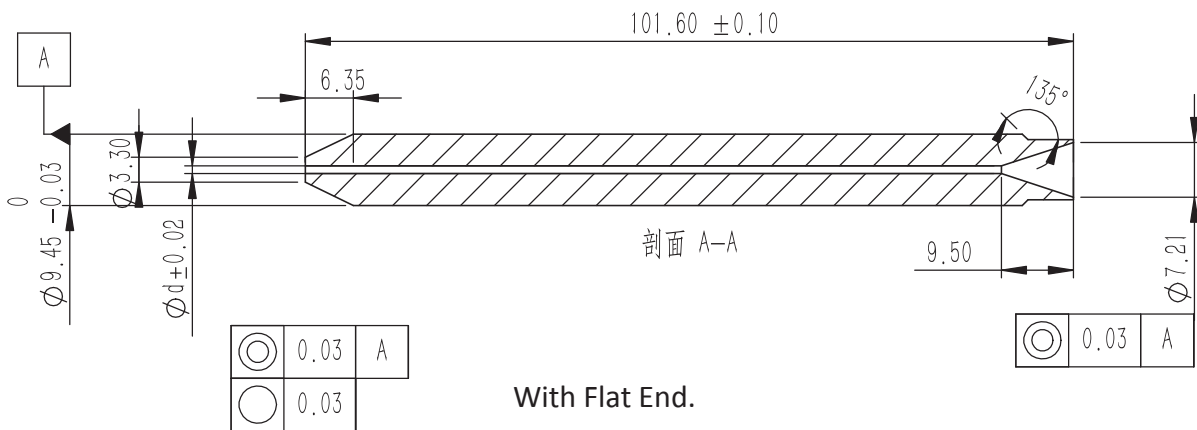
Index	Unit	Value
Density ISO3369	g/cm <sup>3</sup>	≥15.40
HV <sub>05</sub> ISO3878		2980
Microstructure ISO4505	10μm	d2



General



With Mixing Chamber



With Flat End.

HMT-800-1016-0760-00	8	101.6	0.76	
HMT-800-1016-1020-00	8	101.6	1.02	
HMT-812-0762-0760-00	8.12	76.2	0.76	
HMT-812-0762-1020-00	8.12	76.2	1.02	
HMT-897-0762-0760-00	8.97	76.2	0.76	
HMT-897-0762-1020-00	8.97	76.2	1.02	
HMT-897-0762-0760-01	8.97	76.2	0.76	Mixing Chamber
HMT-897-0762-1020-01	8.97	76.2	1.02	Mixing Chamber
HMT-943-0762-0760-00	9.43	76.2	0.76	
HMT-943-0762-0900-00	9.43	76.2	0.9	
HMT-943-0762-1020-00	9.43	76.2	1.02	
HMT-945-0762-0760-00	9.45	76.2	0.76	
HMT-945-0762-0900-00	9.45	76.2	0.9	
HMT-945-0762-1020-00	9.45	76.2	1.02	
HMT-945-0762-0760-01	9.45	76.2	0.76	Flat end
HMT-945-0762-0900-01	9.45	76.2	0.9	Flat end
HMT-945-0762-1020-01	9.45	76.2	1.02	Flat end
HMT-945-0800-0900-00	9.45	80	0.9	
HMT-947-0762-0760-00	9.47	76.2	0.76	
HMT-947-0762-0900-00	9.47	76.2	0.9	
HMT-947-0762-1020-00	9.47	76.2	1.02	

**Disclaimer:** Many factors, especially but not limited to user's knowledge and control, which are beyond SXR's control, can affect the use and performance of a SXR product in a particular application. User is solely responsible for evaluating the SXR product and determining whether it is fit for a particular purpose or for his or her method of application. User is also solely responsible for evaluating third party intellectual property rights and for ensuring the use of SXR product does not violate any third party's intellectual property rights.

**Technical Information:** Technical information, recommendations, and other statements contained in this document or provided by SXR staffers or agents are based on tests or experience believed reliable by SXR. However, the accuracy or completeness of such information intended for professional personnel to assess and apply their own informed judgement to the information is not guaranteed. No license under any SXR or third party's intellectual property rights is granted or implied with this information.

**Headquarter:**

Shanghai Xiang Rong Ind. Equipment Co. Ltd.  
E-mail: [info@xr-ind.cn](mailto:info@xr-ind.cn) URL: <http://www.xr-ind.cn>  
Tel: +86 (0) 21 3616 1907 Fax: +86 (0) 21 3616 0055  
#1-155th Lane Songbao Rd.  
Suite 613 Shanghai 200940 PRC

**HMT GmbH**

Tel: +352 691 968 613  
E-mail: [weydert.s@hmt-cera.com](mailto:weydert.s@hmt-cera.com)  
URL: <http://www.hmt-cera.com>  
Add.: 4, um Bierg 9170 Mertzig Luxembourg

